

Warehouse Management System

Artificial Intelligence
Smart Warehouse Management Total Solution



Warehouse Management System



N-WMS | Streamline Your Warehouse Operations

Welcome to NWMS, your premier partner in warehouse management solutions.

Our cutting-edge platform is designed to **revolutionize the way you manage your warehouse**, providing unparalleled efficiency, accuracy, and scalability.

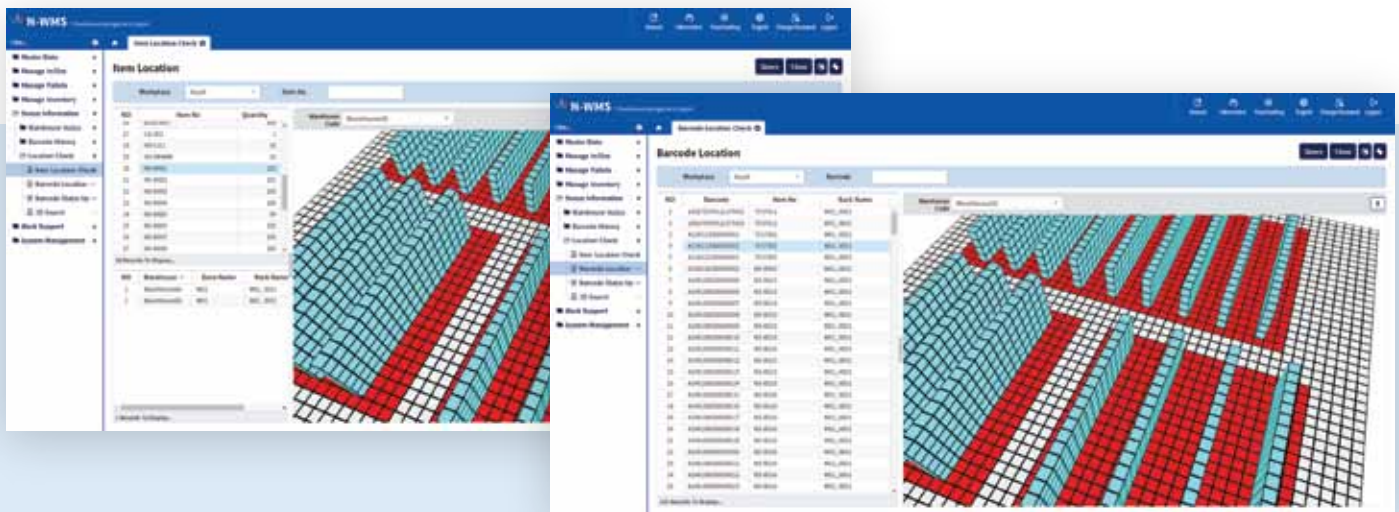
With NWMS, you can **take your warehouse operations to new heights**, empowering your business to thrive in today's dynamic marketplace.



Key Features

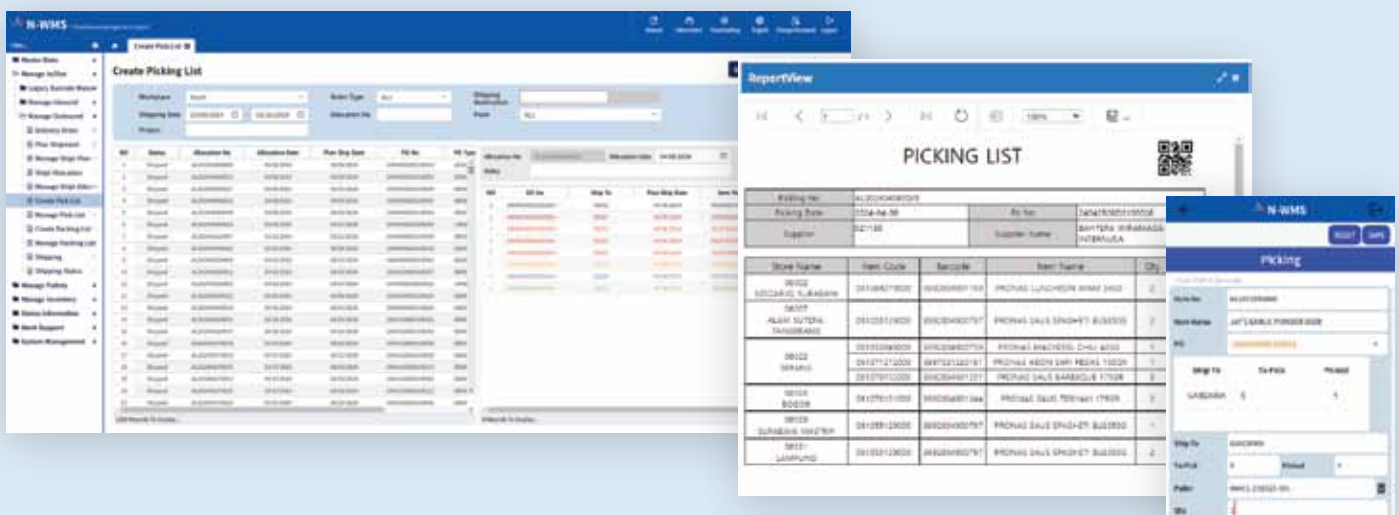
Inventory Management

Gain real-time visibility into your inventory levels, track stock movements, and optimize storage space with our advanced inventory management tools.



Order Fulfillment

Streamline your order processing, picking, packing, and shipping workflows to fulfill orders faster and with greater accuracy, enhancing customer satisfaction.



Warehouse Optimization

Maximize the efficiency of your warehouse layout and operations with dynamic slotting, labor management, and workflow optimization features, reducing costs and improving productivity.



Reporting and Analytics

Harness the power of data-driven insights to make informed decisions and continuously improve your warehouse performance. Our comprehensive reporting and analytics tools provide valuable visibility into key metrics and trends.

AI Powered Warehouse Management System

AI based Features



Path Optimization

Maximize operational efficiency by identifying the optimized path for picking taking into consideration task priority, duration and location.



Voice based function

Control through voice function the following tasks: monitoring, product search, task initiation/termination, etc., and learn continuously from collected data.



AI-GA based Data Analysis

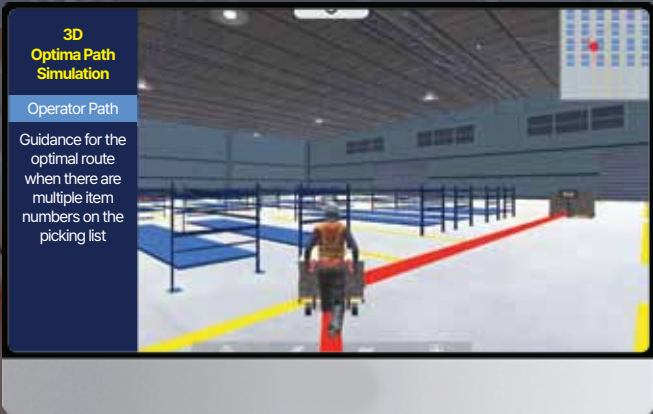
Analyze data using advanced AI techniques and get useful insights to improve warehouse operations.



Skilled Operator Data Analysis

Build ETL processes capable of analyzing work and efficiency using data collected through various sensors.





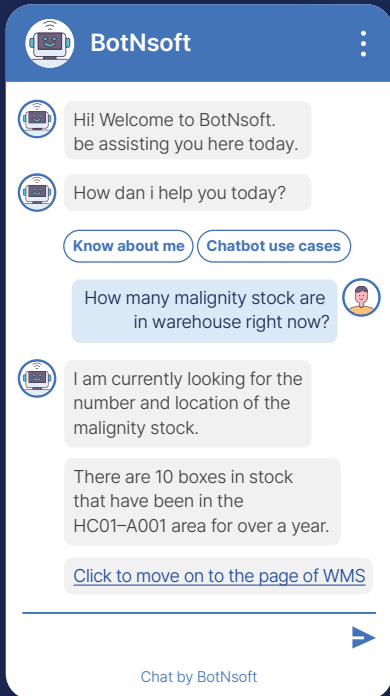
Add-on Module

AI Logistics Prompter

Chatbot-based UI that easily provides data and features of the WMS system when users ask questions in natural language. Users can interact with the WMS system in an intuitive and efficient process, AI Logistics Prompter greatly improves the efficiency of using the system by providing the functionality and data of the WMS easily.

Key Features

- 1. Natural language processing based response :**
Provides WMS data that matches the user's input question and executes functions.
- 2. WMS function automation :**
Calls key WMS functions such as inventory lookup and order processing with simple commands.
- 3. Customized response :**
Provides customized solutions that fit the user's role.
- 4. Data analysis and suggestions :**
Analyzes WMS data to provide insights such as low-stock warnings.
- 5. Continuous learning and improvement :**
AI learns user question patterns to provide more efficient responses.



AI Logistics Dynamic Pricer

Dynamically calculate logistics and warehouse management costs by reflecting real-time data. Optimize costs and enhance competitiveness by reflecting supply and demand, customer needs, etc.

Key Features

- 1. Real-time pricing adjustments :**
Dynamic pricing based on demand changes and warehouse space availability.
- 2. Customized pricing suggestions :**
Provides customized pricing strategies for each customer.
- 3. Competitive pricing response :**
Monitors competitor prices to determine optimal pricing.
- 4. Real-time operating cost reflection :**
Optimizes pricing by reflecting fuel costs, labor costs, etc. in real time.
- 5. Incentives :**
Provide discounts for long-term contracts and early payments.



Benefits

Increased Efficiency

Automate repetitive tasks, minimize errors, and optimize workflows to maximize efficiency and productivity in your warehouse.

Enhanced Accuracy

Reduce inventory discrepancies, order errors, and shipping delays with our advanced tracking and validation capabilities.

Scalability

Whether you're a small business or a global enterprise, WMS grows with you. Our scalable solution adapts to your changing needs and supports your business's growth trajectory.

Cost Savings

By optimizing resource utilization, minimizing waste, and reducing operational inefficiencies, WMS helps you lower costs and improve your bottom line.

Benefits



Using the scanned barcodes attached to items as well as the history of receiving, FIFO inventory can be identified and the inventory loss due to long-term storage can be prevented .



Track the lots of products that are stocked and managed in the warehouse.
Respond in real-time to merging or splitting during material issuance through barcode splitting and merging functions.



Have real time visibility on inventory status by location.
(warehouse, area, rack) and on logistic movements.



Manage warehouse information using barcodes to secure data accuracy that is far superior to existing manual management.
Secure data consistency and efficiency through I/F with legacy systems such as ERP, MES, SCM..



Using data obtained from barcodes, it is possible to obtain Master data information, send incoming and outgoing movements information (I/F) , identify and monitor inventory location and movement.



A system that allows you to check current inventory, quantity, location, movement history, etc. in real time and use the acquired data as basis for business expansion.

Revolutionize your Warehouse Management with Harnessing South Korean Technological Innovations

Customer Success Stories



"We have shifted from the old WMS to the Korean NWMS. The new system allowed us to improve our receiving, putaway, picking and shipping operations and our visibility on the inventory, and helped us in reducing customer complaints as well."

– Logistics Operation Manager



"WMS has transformed our warehouse operations. With real-time visibility into our inventory levels and streamlined workflows, we've been able to reduce stockouts and improve inventory accuracy, resulting in happier customers and increased sales."

– Warehouse Supervisor



"Since implementing WMS, we've seen a significant improvement in our warehouse efficiency.

Our order processing times have been cut in half, allowing us to fulfill customer orders faster than ever before."

– Operations Manager

Our Main Customers





Get Started Today

Ready to take your warehouse operations to the next level?

Contact us today to **schedule a personalized demo** and see firsthand how NWMS can transform your business.

With our expertise and innovative technology, you'll unlock new levels of efficiency, productivity, and profitability in your warehouse management processes.

Experience the NWMS difference today!



Contact Information

For inquiries or to schedule a demo, contact us at:

☎ | + 82-52-260-5535

✉ | admin@nsoft.co.kr

🏠 | <https://nsoft.co.kr>